



Turbo Gif Animator

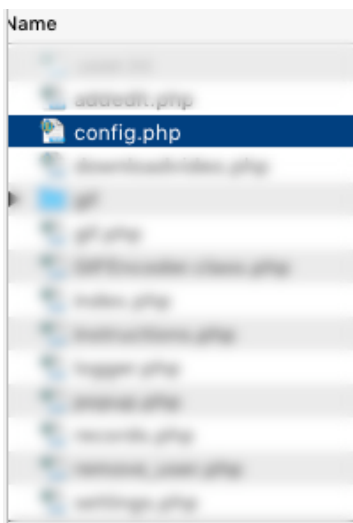
This manual will show you how to install and use the software.

The first thing to do is to create a MySQL database record through your hosting account's cPanel, then create a user with a password and assign the user to the database.

If you have never done it before, watch this video <https://www.youtube.com/watch?v=1vOoUjzW4ls>

The next thing to do is to import the contents of the db.sql file that comes with the software into the database you created, by using phpMyAdmin. If you have never done this before, watch this video <https://www.youtube.com/watch?v=jW5lrS6EUPM>

1 Open config.php



Before uploading the files on your hosting account, open the **admin** folder and then use a text editor to open the **config.php** file

DO NOT USE MICROSOFT WORD or any other similar software to open the file. Use Notepad for Windows, or any text editor.

2 Add your db info

```
1 <?php
2 define('BASEURI', 'http://xxxxxx/');
3
4 define('DB_HOST', 'localhost');
5 define('DB_USERNAME', 'xxxxxx');
6 define('DB_PASSWORD', 'xxxxxx');
7 define('DB_NAME', 'xxxxxx');
8 define('KEY', 'xxxxxxxx');
9
```

Replace **http://xxxxxx** (1) with the URL of the directory where you will install the software.

For example if your domain name was domainname.com and the directory where you uploaded the files was tga, then you'd insert

`http://domainname.com/tga`

hence line 2 would show

```
define('BASEURI', 'http://domainname.com/tga/');
```

Do not change line 4

Replace **xxxxxx** in line 5 (2) with the username of your database

Example: if you created a user like domain_turbo then replace xxxxx with domain_turbo so the final result for that line would be

```
define('DB_USERNAME', 'domain_turbo');
```

Replace **xxxxxx** in line 6 (3) with the password of the user you created and assigned to your database

Example: if you created a password like *&%HS& then insert it inside the quotes like '&%HS&' so the final result for that line would be

```
define('DB_PASSWORD', '&%HS&');
```

Replace **xxxxxx** in line 7 (4) with the name of the database you created.

Example: if you created a database like domain_turbo then replace xxxxx with domain_turbo so the final result for that line would be

```
define('DB_NAME', 'domain_turbo');
```

Once done save the changes.

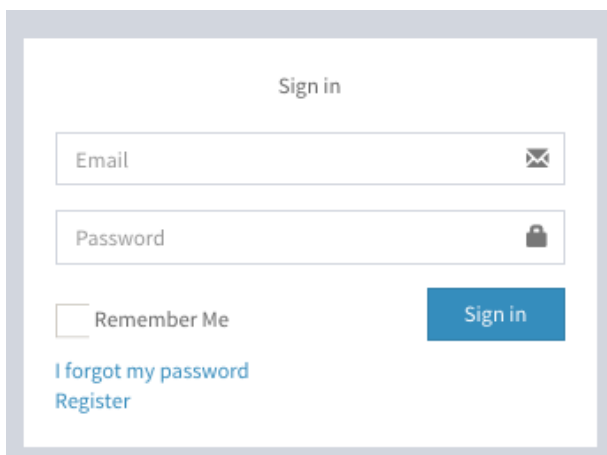
Next:

Create a directory on your server and upload the files of the software inside.

For example, if your domain name is www.domain.com and you created a directory like **tga**, then upload all files in that directory.

Once you are done with the changes, save the changes and proceed with the uploading of all files.

3 Login

A screenshot of a web login form. At the top, it says "Sign in". Below that are two input fields: "Email" with an envelope icon and "Password" with a lock icon. Under the "Email" field is a checkbox labeled "Remember Me". To the right of the "Password" field is a blue button labeled "Sign in". At the bottom left, there are two links: "I forgot my password" and "Register".

For logging in to your administration area visit

<http://domain.com/directory/>

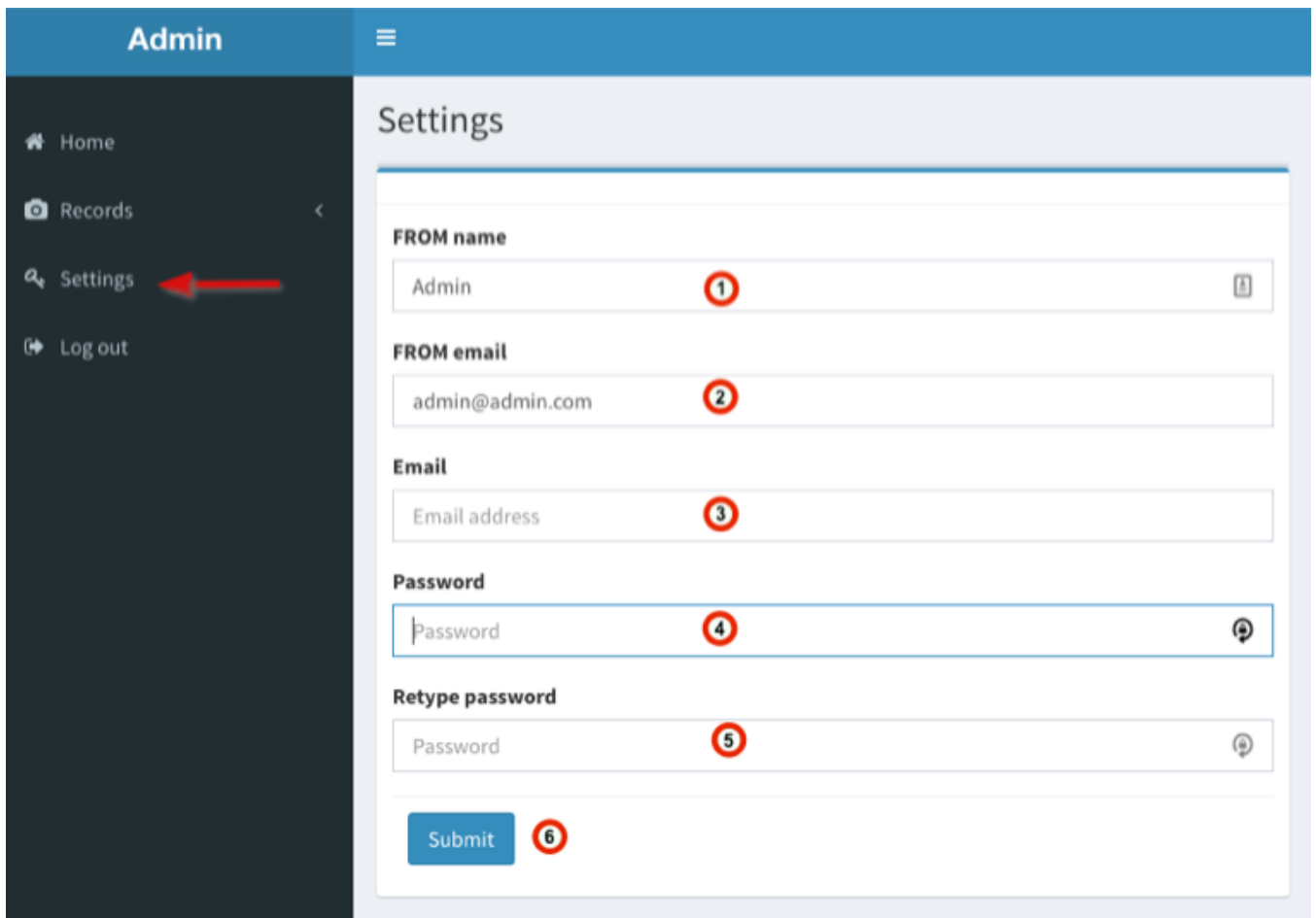
where as

domain.com is your domain, and
directory is the directory where you installed the software

Use the following default credentials to login:

username: admin@admin.com
password: admin

4 Settings



The screenshot shows the Admin interface. On the left is a dark sidebar with a menu containing 'Home', 'Records', 'Settings', and 'Log out'. A red arrow points to 'Settings'. The main area is titled 'Settings' and contains a form with the following fields and annotations:

- FROM name:** A text input field containing 'Admin', with a red circle '1' next to it.
- FROM email:** A text input field containing 'admin@admin.com', with a red circle '2' next to it.
- Email:** A text input field with the placeholder 'Email address', with a red circle '3' next to it.
- Password:** A password input field with the placeholder 'Password', with a red circle '4' next to it.
- Retype password:** A password input field with the placeholder 'Password', with a red circle '5' next to it.
- Submit:** A blue button at the bottom of the form, with a red circle '6' next to it.

The first thing to do when logging in to your dashboard is to click on Settings.

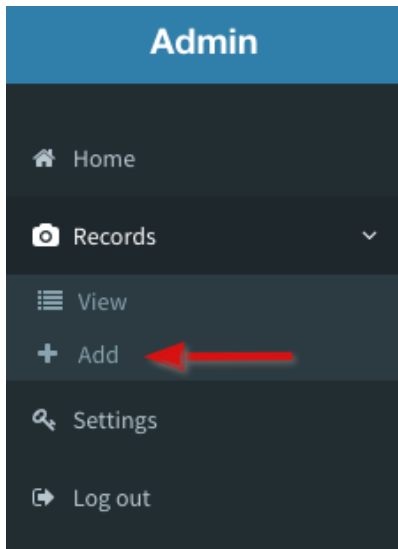
Add your name in "FROM name" field (1)

Add your email in "FROM email" field (2) and also in the "Email" field (3)

Insert a new password (4) (5)

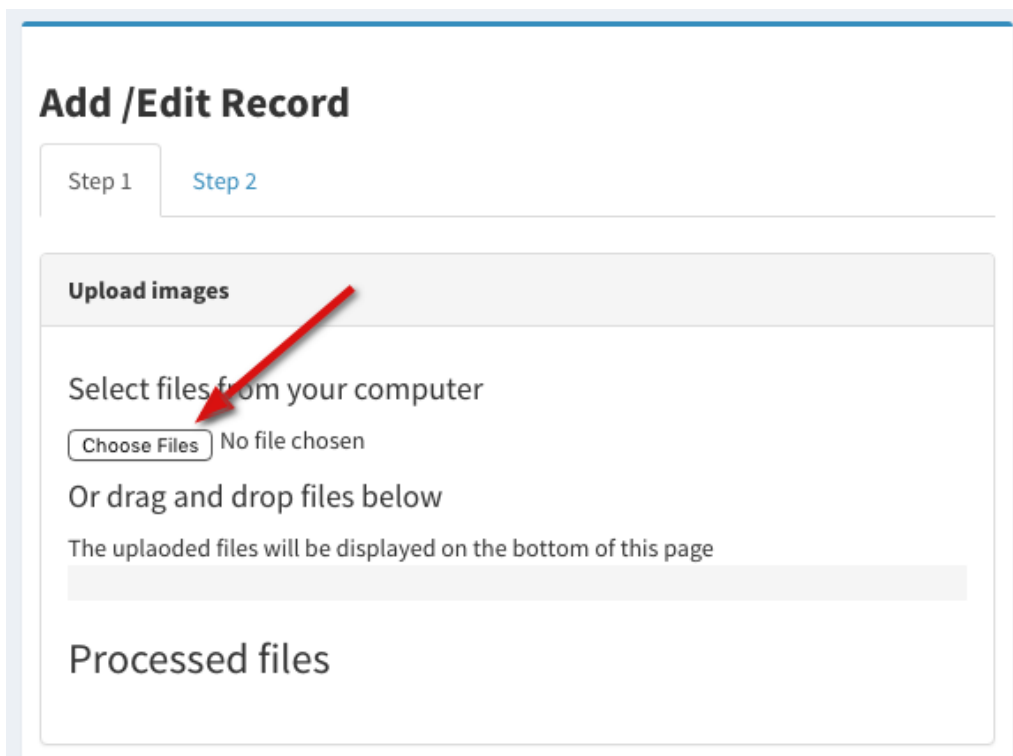
Save your changes (6)

5 Add record



Click on the arrow next to the "Records" option and once it's expanded, click to Add a new record.

6 Option 1: Upload images



You can

- upload images from your computer
- load a YouTube video
- upload an mp4 video

and/OR do any or all the above for creating an animated gif.

So we start with the uploading of images from your computer.

Click on the button to Choose files - you can choose any image file, like .png, .jpg, etc

7 Processed image files

Add /Edit Record

Step 1

Step 2

Upload images

Select files from your computer

Choose Files

No file chosen

Or drag and drop files below

The uploaded files will be displayed on the bottom of this page

Processed files



Screen Shot 2017-05-14 at 12.47.45.png

Delete

Add to workspace



Screen Shot 2017-05-14 at 12.53.10.png

Delete

Add to workspace



Screen Shot 2017-05-14 at 12.47.30.png

Delete

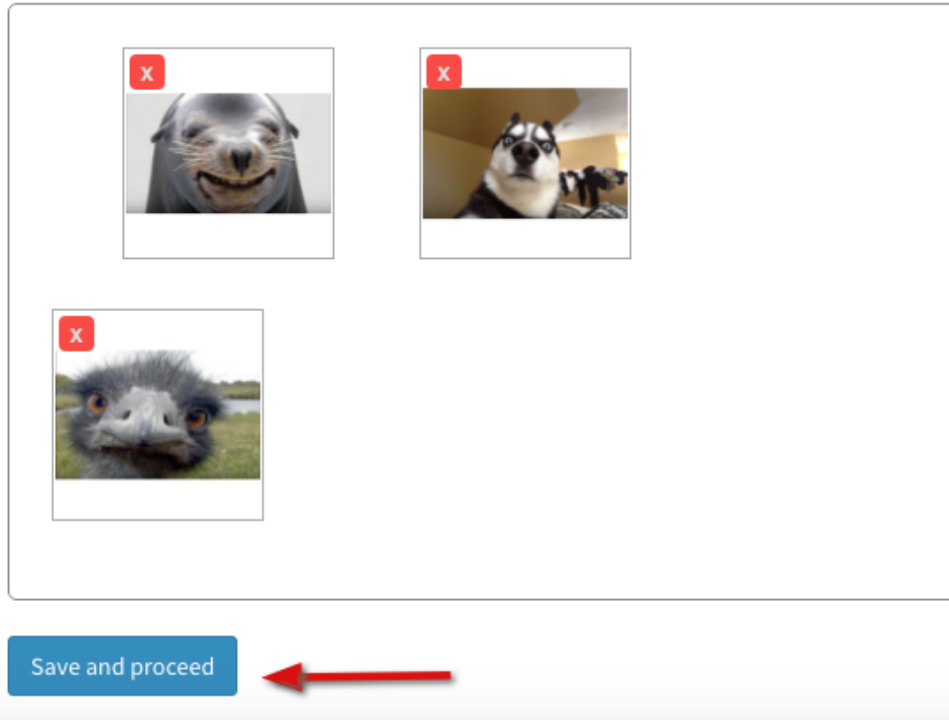
Add to workspace

The software will upload the images and show the progress.

Click on the green button "Add to workspace" next to each image or you can delete an image you do not want to use.

8 Preview the selected images

Preview and re-arrange images from below.

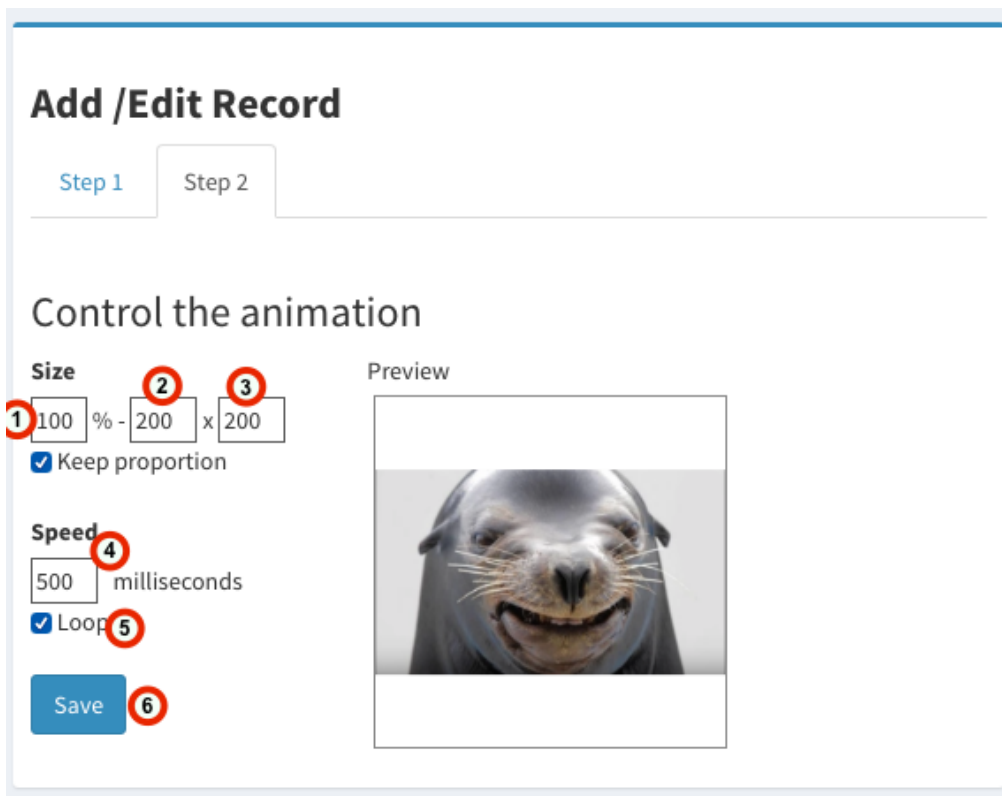


You can preview the images you added to workspace in the bottom of the page.

You can delete any image from there by clicking on the X icon and can also rearrange the images.

Once done, click on the button to Save the changes and Proceed.

9 Control the animation



On Step 2 you can control the display of your animated gif.

You can control the size by defining the % of it - for example if you change 100 to 200% then the image will double in size.

You can also define a specific width (2) and/or height (3)

You can define the speed (4) and if the gif will start over again once finished (5).

Save the changes (6)

10 More control

Add /Edit Record

Step 1Step 2

Control the animation

Size

% - x

☐ Keep proportion


Speed

milliseconds

☒ Loop

Save

Preview




If you would like to control the width or height of the image so to not leave any white space, do the following:

Uncheck the "Keep proportion" option and then play with the width/height values until you get the desired size without any white borders.

Remember to save the changes.

11 List of records

Records				
	Edit	View	Download	Delete

Once you save the record you can see it in the list.

You can click to Edit it, View it, Download and/or Delete it.

12 Option 2: Load a YouTube video

Or get screenshots from a YouTube video

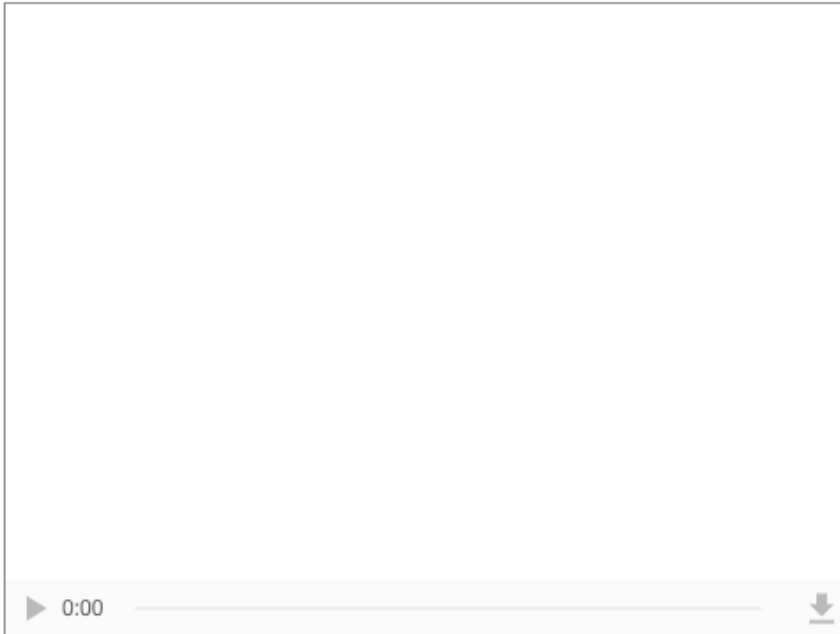
Insert the URL of a YouTube video and click on the Load button:

1

Load

2

Upload mp4 file



Pause the video and click on the button to save a screenshot. Resume and repeat until you save all the screenshots you need. You can delete a screenshot or change its position. Once done click on the 'Proceed' button.

Add screenshot

Option 2 allows you to load a Youtube video by just inserting the URL (1) and then hitting the "Load" button (2)

13 Getting screenshots

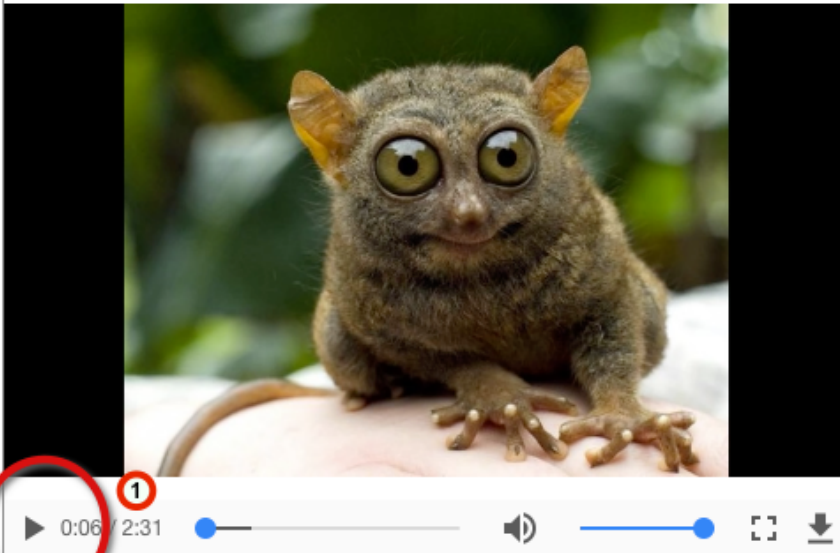
Or get screenshots from a YouTube video

Insert the URL of a YouTube video and click on the Load button:

<https://www.youtube.com/watch?v=...>

Load

Upload mp4 file



Pause the video and click on the button to save a screenshot. Resume and repeat until you save all the screenshots you need. You can delete a screenshot or change its position. Once done click on the 'Proceed' button.

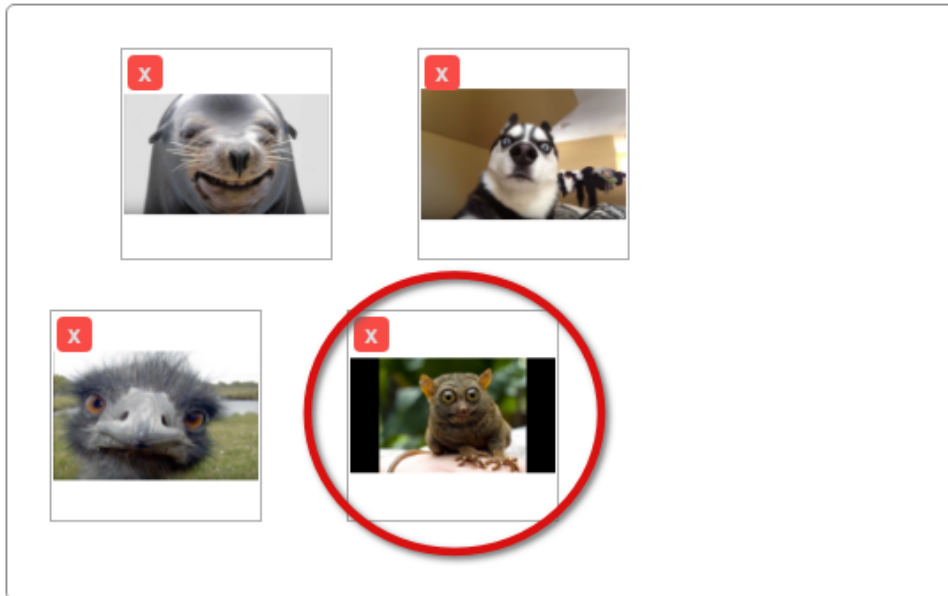
Add screenshot



Once the video is loaded, click on the play button (1) and when you want to take a screenshot pause the video and click on the "Add screenshot" button (2)

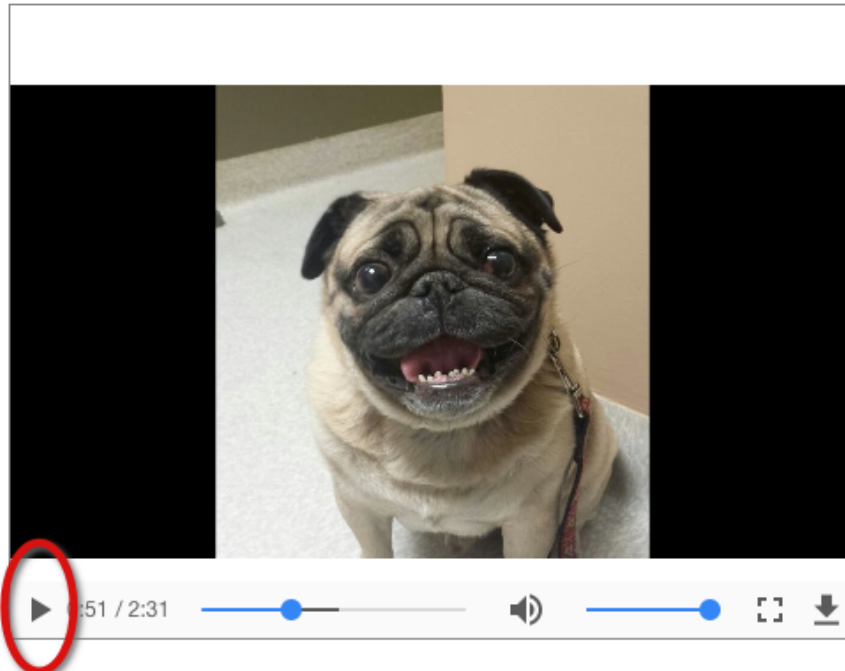
14 Inspect the screenshot

Preview and re-arrange images from below.



The new screenshot is added in the workspace.

15 Repeat



Pause the video and click on the button to save a screenshot. Resume and repeat until you save all the screenshots you need. You can delete a screenshot or change its position. Once done click on the 'Proceed' button.

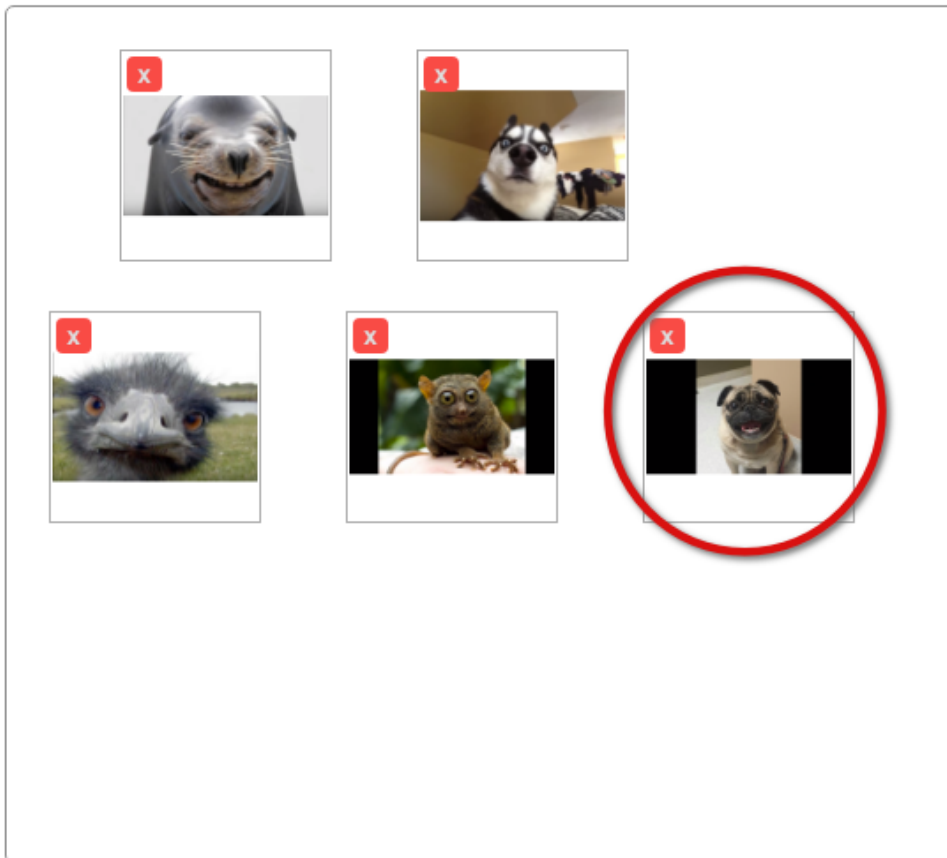
Add screenshot



Repeat the process until you get all the screenshots you want from the video.

16 Inspect the screenshots

Preview and re-arrange images from below.



Save and proceed

Again you can preview all the screenshots you have added, delete any of them, and once done, click on the button to Save the changes and Proceed.

17 Control the animation

Add /Edit Record

Step 1

Step 2

Control the animation

Size

100 % - 200 x 125

☒ Keep proportion

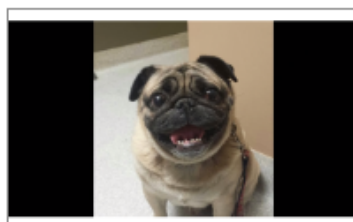
Speed

500 milliseconds

☒ Loop

Save

Preview



You can similarly control the animation as discussed already.


18 Option 3: Load an mp4 video

Or get screenshots from a YouTube video

Insert the URL of a YouTube video and click on the Load button:

Load

Upload mp4 file

 Please wait while uploading video file.

3

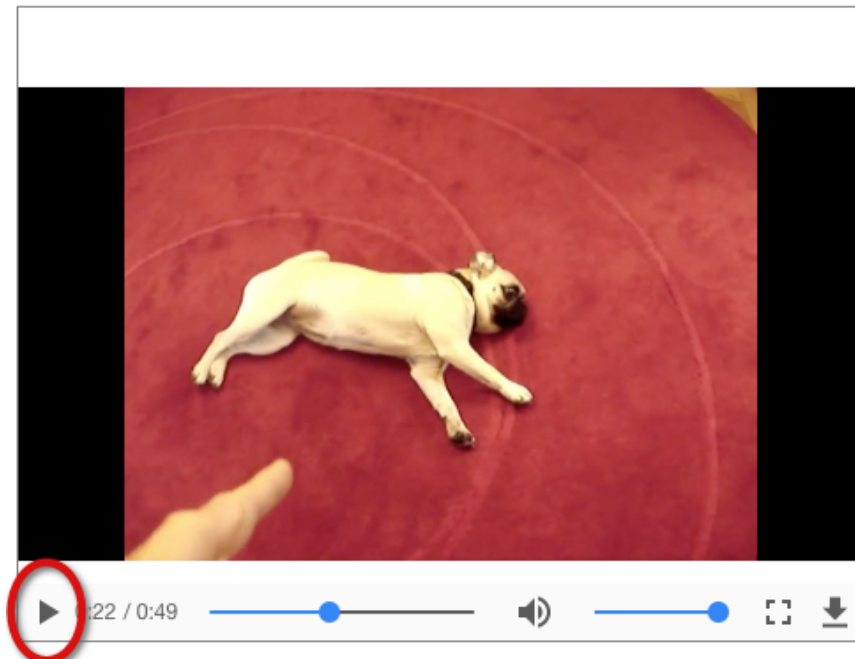
0:00

↓

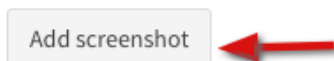
Option 3 allows you to load an mp4 video from your computer by clicking on the "Upload mp4 file" button (1)

REMEMBER NOT TO CLICK ON ANY OTHER BUTTON WHILE THE VIDEO IS BEING UPLOADED!!!

19 Getting screenshots



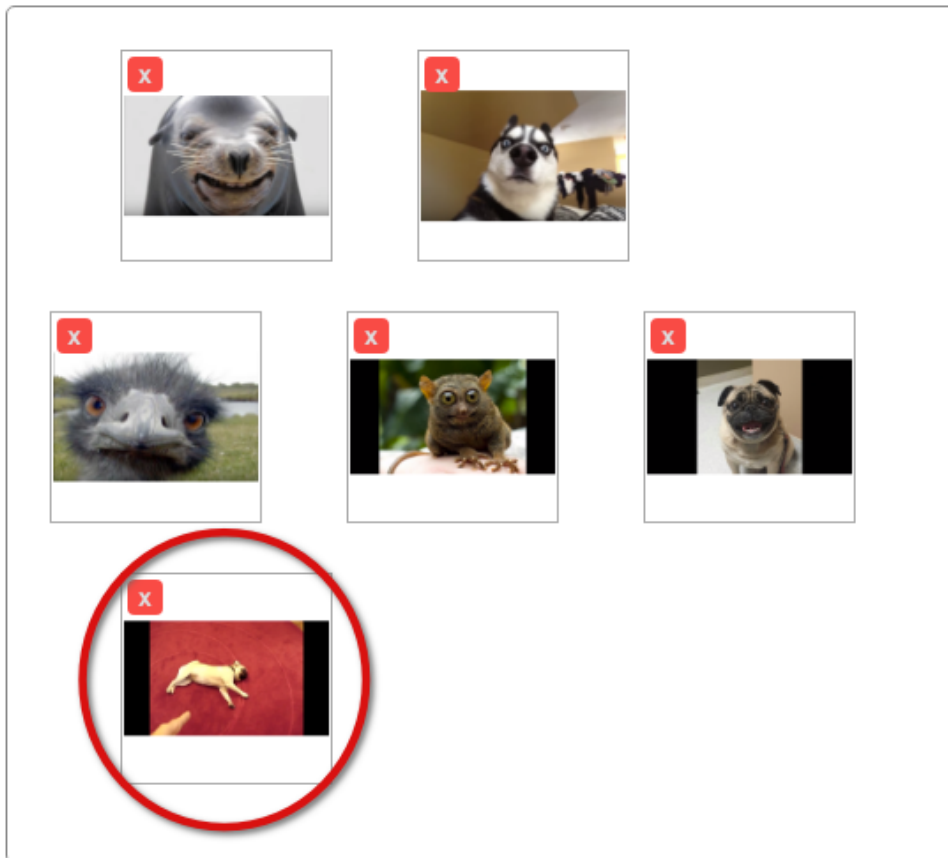
Pause the video and click on the button to save a screenshot. Resume and repeat until you save all the screenshots you need. You can delete a screenshot or change its position. Once done click on the 'Proceed' button.



Similarly once the video is loaded, click on the play button and when you want to take a screenshot pause the video and click on the "Add screenshot" button

20 Inspect the screenshots

Preview and re-arrange images from below.



Save and proceed

The new screenshot is added in the workspace.

21 Control the animation

Add /Edit Record

Step 1Step 2

Control the animation

Size

% - x

☒ Keep proportion

Speed

milliseconds

☒ Loop

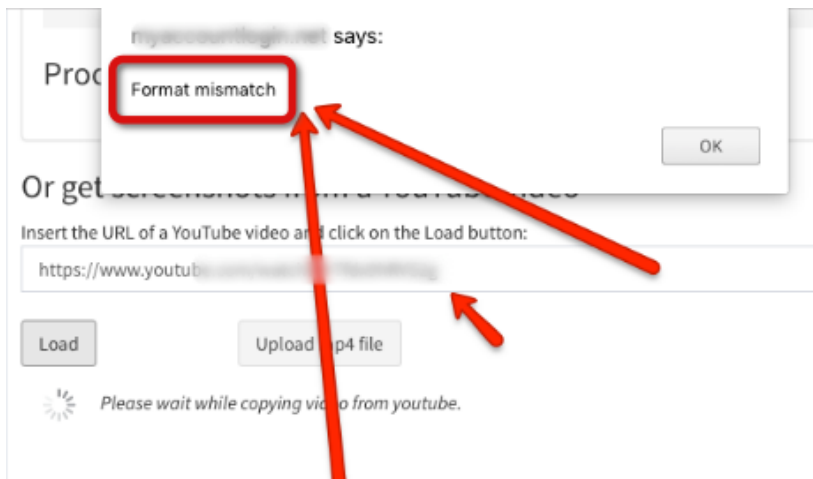
Save

Preview

A preview window showing a small dog lying on a red surface, which is the same image as the one circled in the workspace above.

You can similarly control the animation as discussed already.

22 KNOWN ISSUE #1 - "Format mismatch"



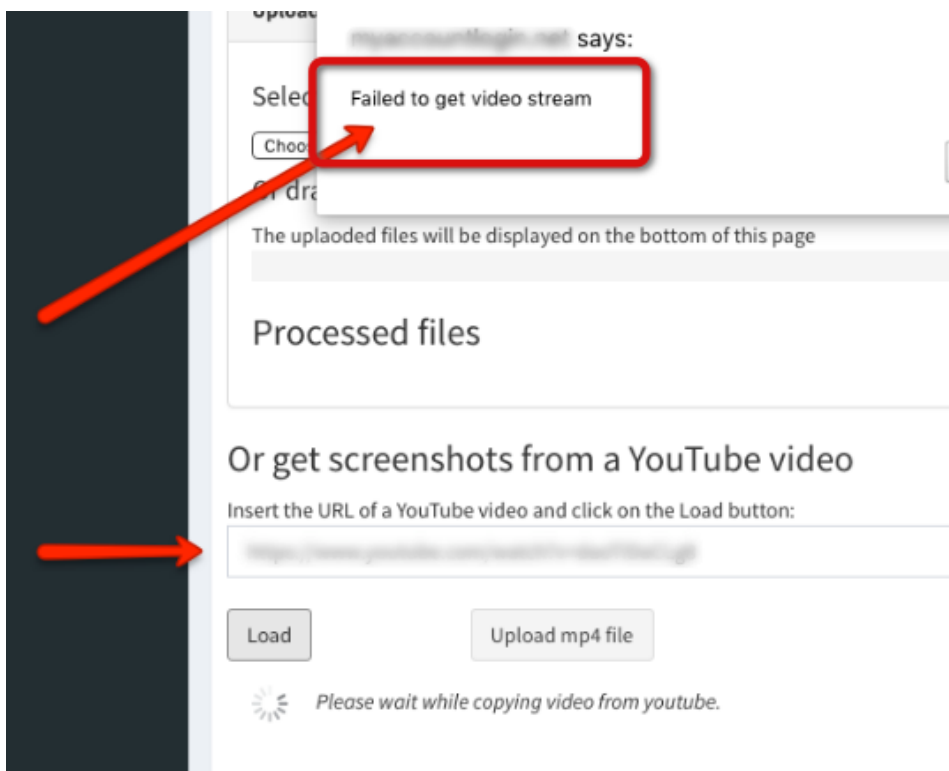
The following is a known issue so please do not submit a support ticket.

If you try to load a YouTube video and get a message on screen that says

"Format mismatch"

that means the format of the original video was not mp4 (as initially uploaded at YouTube) so try with another video.

23 KNOWN ISSUE #2 - "Failed to get video stream"



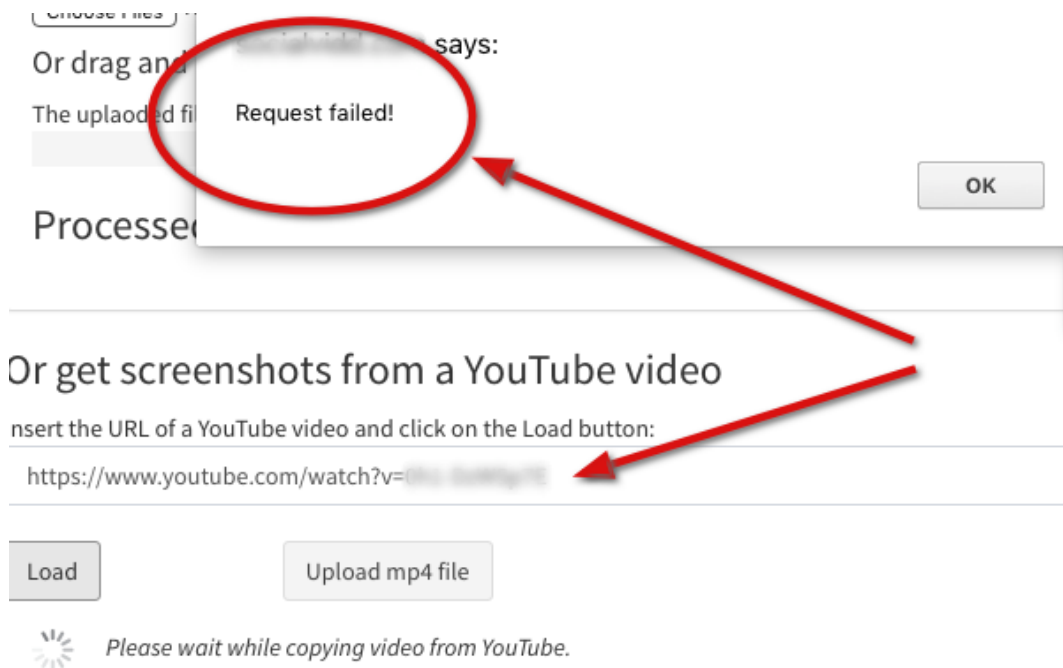
The following is a known issue so please do not submit a support ticket.

If you try to load a YouTube video and get a message on screen that says

"Failed to get video stream"

that means the video at YouTube cannot be used that way through third parties' applications, so try with another one.

24 KNOWN ISSUE #3 - "Request failed"



The following is a known issue so please do not submit a support ticket.

If you try to load a YouTube video and get a message on screen that says

"Request failed!"

that means your hosting account does not allow you to download video files through the software. This is quite a technical issue and the solutions vary so you need to contact your host and ask for support. Some technical jargon you can pass to your host:

"The most common reason is that the server restricts the maximum download size from external domains. The issue may be fixed with changes in the php.ini file or by just increasing the max allowed download size - like for example overriding the values in .htaccess file, if the server allows to do it, or create a .user.ini file with required values in the software's directory."

25 KNOWN ISSUE #4 - Images are not displayed

Pause the video and click on the button to save a screenshot. Resu
screenshot or change its position. Once done click on the 'Save an

Add screenshot

Preview and re-arrange images from below.



if you tried to upload your images and the images are not displayed then chances are you did not enter the URL of the software's directory inside the /admin/config.php file

Make sure to read the section "Add your db info" above.

